

DELUXE SIGNACADE A-FRAME

OUTDOOR DISPLAYS

PRODUCT CODE: 140NS



OnGraphic

On Frame



PRODUCT DESCRIPTION

The Signicade Deluxe is a hard working, heavy duty, all purpose sign frame. This classic A frame sign can display two 24" x 36" coroplast graphics, one on the front and the other on the back. Graphics simply just slide into the frame with tabs on the left and right sides that hold your graphic in place. Each sign frame has four fill holes (two on each side of the frame) that allow you to add sand to give your Signicade extra weight for use outdoors. Simply remove plugs from fill holes and fill each hole with sand. Up to 2.5 lbs. of sand per hole for a total of 10 lbs of added weight. If you'd like to produced your own graphics these accept any rigid materials up to 3/16" thick.

DISPLAY DIMENSIONS	26.75"W x 43.25"H x 33.5"D
GRAPHIC SIZE	24"W x 36"H

GRAPHIC MATERIAL

4mm thick Coroplast

GRAPHIC FINISHING

Cut to size

DISPLAY CONSTRUCTION

Plastic

SHIPPING WEIGHTS & DIMENSIONS

Shipping Weight	20 lbs (frame and graphic)
Shipping Dimensions	47"L x 29"W x 3"D

GRAPHIC TURN AROUND TIME

3 business days after proof approval for up to 10

AVAILABILITY	CA, PA, and PFC
--------------	-----------------



DELUXE SIGNACADE A-FRAME

OUTDOOR DISPLAYS

PRODUCT CODE: 140NS



PARTS LIST



Signicade Deluxe
(qty 1)



TEMPLATE

PLEASE DELETE ALL TEMPLATE ELEMENTS BEFORE UPLOADING

Deluxe Signacade A-Frame
24" X 36"

UPLOAD AT 100% SCALE
DOCUMENT SIZE 24" x 36"
USE SAME TEMPLATE FOR BOTH SIDES

GRAPHIC DIMENSIONS: 24"W x 36" H
YELLOW SAFE AREA: 22"W x 34" H

*KEEP ALL IMPORTANT GRAPHICS
SUCH AS: LOGOS, TEXT, CONTACT INFO, ETC.
IN THE YELLOW SAFE ZONE*

*ARTWORK IN THE BLUE AREA WILL PRINT BUT IS IN RISK
OF BEING CLOSE TO THE EDGE OR TRIMMED OFF*

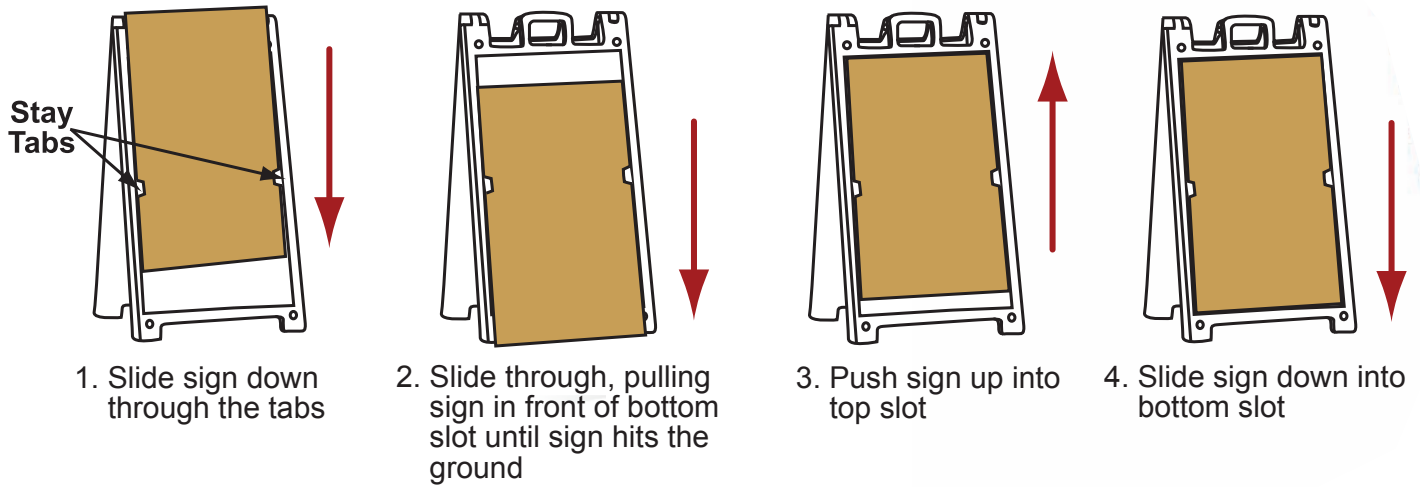
Graphic Specifications:	Acceptable file formats:
- Create to template specs	- Photoshop (.psd, .psb)
- 125 DPI resolution	- Illustrator (.ai, .eps)
- CMYK color	- Flattened .tiff
- No template lines	- Press quality .pdf
- Embed/link all images	
- Create to outline all fonts	

Ver-0506.22



SET UP INSTRUCTIONS

Sign Insertion Instructions:



Sand Ballasting Instructions



Sand Fill Holes

Each sign frame has four fill holes, two on each side of the frame.

Remove plug from fill hole and fill each hole with sand. 2.5 lbs. of sand per hole for a total of 10 lbs. per sign frame is recommended.

Play sand is suggested for ease of filling.